

**MADERA**  
STAF

# MADERA

## SERIES

### Strength in Elegance

Bringing the essence of Madera City, California, to life, the Madera Series Commercial Patio Umbrella captures the rugged beauty and timeless sophistication of nature. With its elegant wood grain finish and durable design, this umbrella is built for commercial spaces that demand both style and resilience.

The Madera Series provides reliable shade and unmatched durability, making it a dependable solution for outdoor environments. Its refined, minimalist aesthetic enhances any setting, offering seamless integration into landscapes that value both form and function. Built to withstand the elements, the Madera Series reflects the enduring beauty and strength of the natural world.

Elevate your commercial space with the Madera Series—a testament to nature's elegance and strength.



**Commercial Grade**



**Pulley Lift**



**Fiberglass Ribs**



**Stainless Steel Hardware**

**CALIFORNIA  
UMBRELLA**

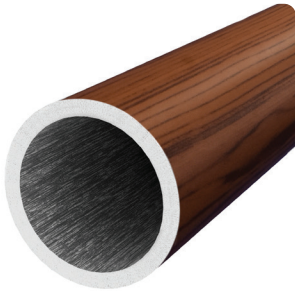


# MADERA

STAF

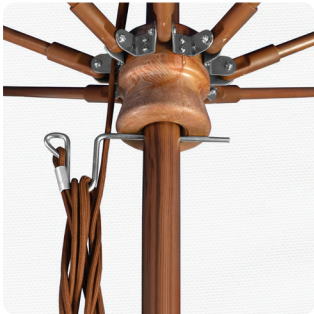


## FEATURES



### Commercial Grade Durability

Woodgrain-finished aluminum mast with 2mm pole thickness offers superior strength, stability, and wear resistance, outperforming real wood umbrellas.



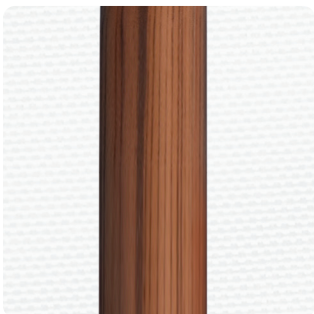
### Pulley Lift System

Effortless pulley lift mechanism simplifies opening and closing, ensuring convenient and smooth operation.



### Flexible Fiberglass Ribs

Oversized 16mm fiberglass ribs provide exceptional wind resistance and durability, keeping the umbrella sturdy in tough conditions.



### Elegant Wood Grain Finish

Wood-finished aluminum frame combines natural elegance with lightweight durability, enhancing outdoor aesthetics and structural integrity.

## FRAME FINISHES



Walnut

## FABRIC OPTIONS



## CANOPY CUSTOMIZATION

### Cut Style



SWV



Edge



DWV



Alternating



Twist

### Valance



No Valance



Standard

Size options may limit certain features. Online listings might not reflect all supported options; for special requests, email [sales@marchproducts.com](mailto:sales@marchproducts.com)



## CONFIGURATION

---

### MODEL NAME

STAF118202-5404

### FRAME FINISH

Walnut

### CANOPY STYLE

Single Wind Vent

### PRIMARY FABRIC

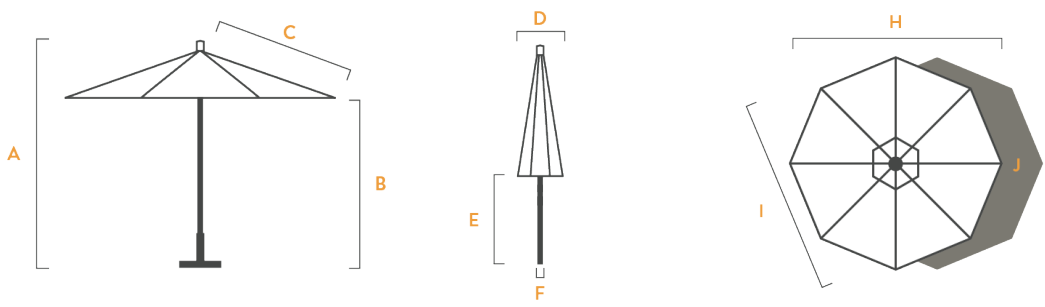
Sunbrella 5404 Natural



### MAKE YOUR OWN



SCAN ME

SPECIFICATIONS



SHAPES		
MODEL NAME	STAF118	STAF908
SIZES	11FT x 8 RIBS	9FT x 8 RIBS
A <sub>(in/cm)</sub>	OVERALL HEIGHT	102 ¾ / 261      102 ¾ / 261
B <sub>(in/cm)</sub>	CANOPY CLEARANCE	80 ⅝ / 204      78 ¾ / 200
C <sub>(in/cm)</sub>	RIB LENGTH	67 ⅞ / 172      55 ⅞ / 140
D <sub>(in/cm)</sub>	PARASOL WIDTH	7 ½ / 19      7 ½ / 19
E <sub>(in/cm)</sub>	TABLE CLEARANCE	31 ⅞ / 81      44 ⅞ / 112
F <sub>(in/cm)</sub>	POLE DIAMETER	1 ½ / 3.8      1 ½ / 3.8
G <sub>(in/cm)</sub>	BOTTOM POLE	N/A      N/A
H <sub>(in/cm)</sub>	CANOPY TIP TO TIP	129 ⅞ / 330      104 ⅞ / 265
I <sub>(in/cm)</sub>	CANOPY FLAT TO FLAT	120 / 305      96 ¾ / 246
J <sub>(ft²/m²)</sub>	SHADE COVERAGE	82.89 / 7.70      53.45 / 4.97

Dimension Tolerances ± 2" / 5cm. Dimensions shown are rounded to the nearest inch/cm and correspond to indicated lift system. Options are subject to change without notice.

PRICING

(\$)	OLEFIN	N/A	N/A
(\$)	PACIFICA	N/A	N/A
(\$)	SUNBRELLA 1A	1100	950
(\$)	SUNBRELLA 2A	1170	970
(\$)	SUNBRELLA AWNING	1250	1050